



**MEDICAL**

# SPRING '22 PRODUCT GUIDE

## WE'VE RAISED OUR STANDARDS

New and improved European Wash Standards mean ultra-efficient laundering and an extra-polished appearance.

# CMT

Compagnie Marseillaise  
de Textile





**MEDICAL**

# DEFINING DURABILITY SINCE 1922

For nearly a century Dickies has epitomized the strength and spirit of the American worker, making best-in-class quality and customer satisfaction their top priorities.

Dickies Medical continues to deliver first-rate functionality, with classic scrubs and comfort-tech features designed for style-minded healthcare professionals. Alongside apparel sold in retail and online channels, a new collection has been developed specifically for the industrial laundry market, made from an exclusive fabric that can withstand rigorous laundering protocols, while offering maximum comfort, stretch, and fit.





**DKE615**  
V-Neck Top  
in Pewter  
(PWPS)



# 5 BALANCE



# 9 EDS ESSENTIALS



# 13 EDS SIGNATURE

## TABLE OF CONTENTS

5	BALANCE
9	EDS ESSENTIALS
13	EDS SIGNATURE
18	FIT GUIDE
19	SIZE CHARTS
20	INDEX & COLOUR ABBREVIATIONS

cover:  
**DKE870**  
V-Neck Top with  
Rib-Knit Panels  
in Royall  
(ROY)

top:  
**DKE845**  
V-Neck Top  
in Royall  
(ROY)

center:  
**DKE625**  
Mock Wrap Top  
in Caribbean  
Blue  
(CAPS)

bottom:  
**DKE86706**  
V-Neck Top  
in Wine  
(WIWZ)



BALANCE

# STYLE HIGHLIGHTS



2-WAY  
STRETCH



SIGNATURE  
STYLING



DRAPES  
PERFECTLY

**DKE870**

V-Neck Top  
With Rib-Knit Panels  
in Royal  
(ROY)



# FUNCTION AND STYLE IN EQUAL BALANCE.

A go-to collection that checks all the boxes, Dickies Balance delivers on-trend details, a flattering and comfortable fit, and in-demand performance features. In popular core colours and an extensive size range for women and men, this collection helps individuals and groups find the perfect balance.

## WOMEN'S

### DKE870 V-Neck Top With Rib-Knit Panels



**Sizes:**  
XXS-3XL (68.5cm)

- Contemporary fit
- Two patch pockets
- Rib-knit neckband and back panels
- Bungee ID badge loop
- Shirttail hem
- Tonal label

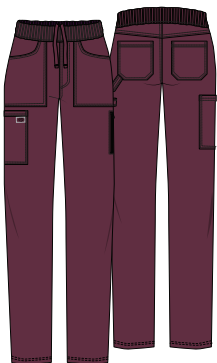
**Fabric:**  
77 Poly/20 Rayon/3 Elastane Twill

**Care:**  
60°

**Available Colours:**

Black BLK	Ciel Blue CIE	Navy NAV
Pewter PWT	Wine WIN	Royal ROY
White WHT		

### DKE135 Mid Rise Pull-on Trouser



**Sizes:**  
XXS-3XL (76cm)

- Contemporary fit
- Rib-knit covered elastic with inside drawstring
- Six pockets: two front patch pockets, cargo pocket, hidden zipper pocket, two back patch pockets
- Mock fly
- Utility loop
- Tonal label
- Straight leg, 38cm opening

**Fabric:**  
77 Poly/20 Rayon/3 Elastane Twill

**Care:**  
60°

**Available Colours:**

Black BLK	Ciel Blue CIE	Navy NAV
Pewter PWT	Wine WIN	Royal ROY
White WHT		

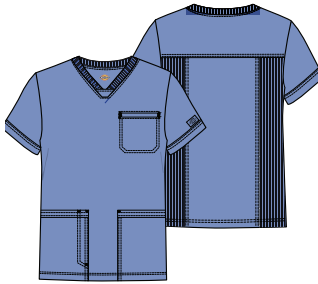
DKE135  
Mid Rise Pull-on  
Pant in Royal  
(ROY)



## MEN'S

**DKE845**

V-Neck Top

**Sizes:**

XXS-3XL (76cm)

- Men's fit
- Three pockets: patch pockets, chest pocket
- Pen slot on right patch pocket
- Rib-knit neckband and back side panels
- Back yoke
- Tonal label

**Fabric:**

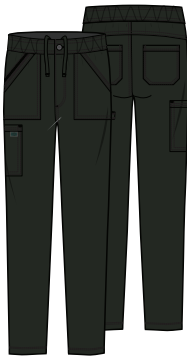
77 Poly/20 Rayon/3 Elastane Twill

**Care:****Available Colours:**

Black BLK	Ciel Blue CIE	Navy NAV
Pewter PWT	Royal ROY	Wine WIN

**DKE220**

Mid Rise Zip Fly Trousers

**Sizes:**

XXS-3XL (80cm)

- Men's fit
- Elastic waistband with inside drawstring
- Zip fly with button closure
- Six pockets: front patch pockets, cargo pocket, back patch pockets, a hidden zipper pocket
- Tonal label
- Straight leg, 40.5cm opening

**Fabric:**

77 Poly/20 Rayon/3 Elastane Twill

**Care:****Available Colours:**

Black BLK	Ciel Blue CIE	Navy NAV
Pewter PWT	Royal ROY	Wine WIN

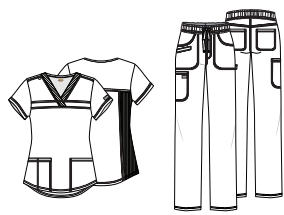
**DKE845**V-Neck Top  
in Black  
(BLK)**DKE220**Mid Rise Zip Fly Trousers  
in Black  
(BLK)



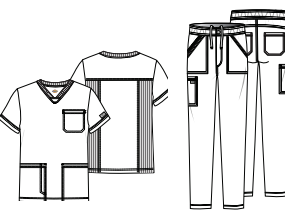
BALANCE  
COLOR AND  
STYLE MATRIX

All styles and colors featured are reorderable. Styles are made from Poly/Rayon/Elastane Twill, unless noted. Center back lengths and inseams are noted in parentheses.

WOMEN



MEN'S



DKE870

V-Neck Top  
With Rib-Knit  
Panels  
XXS-3XL  
(68.5cm)

DKE135

Mid Rise  
Pull-on Trouser  
XXS-3XL  
(76cm)

DKE845

V-Neck Top  
XXS-3XL  
(76cm)

DKE220

Mid Rise  
Zip Fly Trouser  
XXS-3XL  
(80cm)

Black	BLK				
Navy	NAV				
Pewter	PWT				
Ciel Blue	CIE				
Royal	ROY				
Wine	WIN				
White	WHT			style not available in this color	style not available in this color







# STYLE HIGHLIGHTS



4-WAY  
STRETCH



STRONG &  
DURABLE



EASY CARE



DK615  
V-Neck Top  
in Pewter  
(PWPS)

# ESSENTIAL WORKWEAR FOR ESSENTIAL WORKERS.

EDS Essentials continues to offer performance, value, durability, and style that works overtime. Made from a comfortable four-way stretch, moisture-wicking poly/elastane in an ever-expanding selection of colours and styles, it's workwear that works all day long.

## WOMEN'S

### DKE615 V-Neck Top



**Sizes:**  
XXS-3XL (66cm)

- Contemporary fit
- Twill tape at neckline
- Two patch pockets
- Pen slot with utility twill tape
- Instrument loops inside left pocket
- Shoulder yokes
- Instrument loops with snap at right shoulder
- Back princess lines
- Signature tonal woven label
- Signature logo twill tape at the back neck
- Side vents

**Fabric:**  
95 Poly/5 Elastane Poplin

**Care:**  
60°

**Available Colours:**

Navy NYPS	Pewter PWPS
--------------	----------------

### DKE625 Mock Wrap Top



**Sizes:**  
XXS-3XL (66cm)

- Contemporary fit
- Shoulder yokes
- Instrument loops at right shoulder
- Two patch pockets
- Pen slot with utility twill tape
- Instrument loops and bungee loop at left pocket
- Signature tonal woven label
- Signature logo twill tape inside back neck
- Side vents

**Fabric:**  
95 Poly/5 Elastane Poplin

**Care:**  
60°

**Available Colours:**

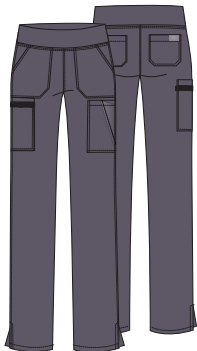
Black BAPS	Caribbean Blue CAPS	Navy NYPS
Pewter PWPS	Wine WNPS	White WTPS

DKE015  
V-Neck Top  
in Pewter  
(PWPS)



WOMEN'S (CONT.)

DKE005  
Natural Rise  
Pull-on Cargo Trouser



- Sizes:**  
XXS-3XL (76cm)
- Contemporary fit
  - Rib-knit covered elastic waistband
  - Seven pockets: two front patch pockets, two cargo pockets, accessory pocket, two back patch pockets
  - Utility twill tape instrument loops on right cargo pocket
  - Side vents
  - Tapered leg, 38cm opening

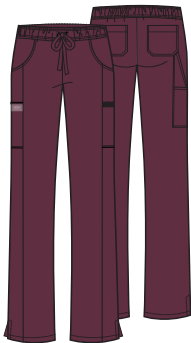
**Fabric:**  
95 Poly/5 Elastane Poplin

**Care:**  
60°

**Available Colours:**

Navy NYPS	Pewter PWPS
--------------	----------------

DKE010  
Mid Rise Drawstring Trouser



- Sizes:**  
XXS-3XL (80cm)
- Contemporary fit
  - Elastic waistband with drawstring
  - Seven pockets: two front pockets, two cargo pockets, accessory pocket, and two back pockets
  - Side vents
  - Straight leg, 43cm opening

**Fabric:**  
95 Poly/5 Elastane Poplin

**Care:**  
60°

**Available Colours:**

Black BAPS	Caribbean Blue CAPS	Navy NYPS
Pewter PWPS	Wine WNPS	White WTPS <sup>1</sup>

<sup>1</sup>95 Polyester/5 Spandex Heathered Poplin

MEN'S

DKE645  
V-Neck Top



- Sizes:**  
XXS-3XL (73.5cm)
- Men's fit
  - Four pockets: patch pockets, chest pocket with pen slot, accessory pocket
  - Utility twill tape instrument loops on right pocket
  - Signature tonal woven label
  - Signature logo twill tape inside back neck
  - Side vents

**Fabric:**  
95 Poly/5 Elastane Poplin

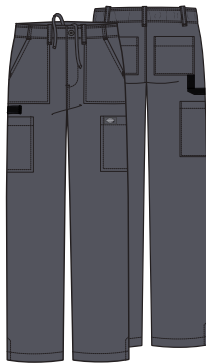
**Care:**  
60°

**Available Colours:**

Black BAPS	Caribbean Blue CAPS	Ciel CIPS
Galaxy Blue GAB	Navy NYPS	Pewter PWPS
Royal RYPS	Wine WNPS	White WTPS <sup>1</sup>

<sup>1</sup>95 Polyester/5 Elastane Heathered Poplin

DKE015  
Natural Rise Drawstring Trouser



- Sizes:**  
XXS-3XL (82cm)
- Men's fit
  - Back elastic waistband with inside drawstring
  - Zip fly with button closure
  - Five belt loops
  - Six pockets: two front patch pockets, two cargo pockets, two back pockets
  - Utility twill tape instrument loop
  - Signature tonal woven label
  - Side vents
  - Straight leg, 43cm opening

**Fabric:**  
95 Poly/5 Elastane Poplin

**Care:**  
60°

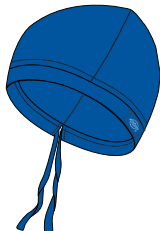
**Available Colours:**

Black BAPS	Caribbean Blue CAPS	Ciel CIPS
Galaxy Blue GAB	Navy NYPS <sup>1</sup>	Pewter PWPS <sup>1</sup>
Royal RYPS	Wine WNPS	White WTPS <sup>1</sup>

<sup>1</sup>95 Polyester/5 Elastane Heathered Poplin

UNISEX

DKE502  
Unisex  
Scrubs Hat



- Sizes:**  
OS
- Unisex fit
  - Adjustable drawstring
  - Hidden terrycloth band for comfort
  - Signature tonal woven label

**Fabric:**  
95 Poly/5 Elastane Poplin

**Care:**  
60°

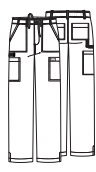
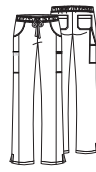
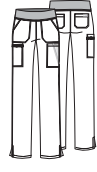
**Available Colours:**

Black BAPS	Caribbean Blue CAPS	Galaxy Blue GAB
Hunter Green HNPS	Navy NYPS	Pewter PWPS
Royal RYPS	Wine WNPS	

EDS ESSENTIALS  
COLOR AND  
STYLE MATRIX

All styles and colors featured are reorderable, unless otherwise noted. Styles are made from Poly/Elastane Poplin. Center back lengths and inseams are noted in parentheses.

WOMEN'S



DKE615

V-Neck Top  
XXS-3XL (66cm)

DKE625

Mock Wrap Top  
XXS-3XL (66cm)

DKE005

Natural Rise  
Pull-on Cargo  
Trousers  
XXS-3XL (76cm)

DKE010

Mid Rise  
Drawstring Trousers  
XXS-3XL (80cm)

DKE645

V-Neck Top  
XXS-53L (73.5cm)

DKE015

Natural Rise  
Drawstring Trousers  
XXS-3XL (82cm)

Black	BAPS
Navy	NYPS
Pewter	PWPS
Royal	RYPS
Wine	WNPS
Caribbean Blue	CAPS
Ciel	CIPS
White	WTPS
Galaxy Blue	GAB

style not available in this color		style not available in this color			
style not available in this color	style not available in this color	style not available in this color	style not available in this color		
style not available in this color		style not available in this color			
style not available in this color		style not available in this color			
style not available in this color	style not available in this color	style not available in this color	style not available in this color		
style not available in this color		style not available in this color			
style not available in this color	style not available in this color	style not available in this color	style not available in this color		

UNISEX



DK502

Scrubs Hat  
OS

Black BAPS
Navy NYPS
Pewter PWPS
Royal RYPS
Wine WNPS
Caribbean Blue CAPS
Hunter Green HNPS
Galaxy Blue GAB





# SIGNATURE QUALITY AND STYLE



**SIGNATURE  
STYLING**



**STRONG &  
DURABLE**



**EASY CARE**

This popular collection, in sizes up to 3XL, reflects the commitment to comfort, durability, performance, and fit for which Dickies Medical is known.

**DKE81006**

Natural Rise Zip Fly  
Pull-on Pant  
in navy  
(NVMZ)



## WOMEN'S

### DKE86706 V-Neck Top



**Sizes:**  
XXS-3XL (68.5cm)

- Modern Classic fit
- Two patch pockets
- Red knit interior pocket (White for White)
- Logo twill tape inside back neck
- Side vents

**Fabric:**  
Brushed 55 Cotton/45 Poly Poplin

**Care:**  
60°

**Available Colours:**

Black BLWZ	Caribbean Blue CAWZ	Ciel CIWZ
Eggplant EGWZ	Hunter HUWZ	Navy NVWZ
Royal ROWZ	Teal Blue TLWZ	White WHWZ
Wine WIWZ	Pewter PTWZ	

### DKE632 Mock Wrap Tunic



**Sizes:**  
XXS-3XL (71cm)

- Contemporary Fit
- 3 Pockets: Patch Pockets
- Side vents
- Adjustable tie back

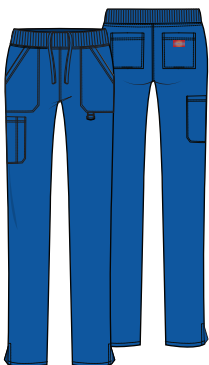
**Fabric:**  
Brushed 55 Cotton/45 Poly Poplin

**Care:**  
60°

**Available Colours:**

Black BLWZ	Ciel CIWZ	Navy NVWZ
Royal ROWZ	Wine WIWZ	Pewter PTWZ

### DKE125 Mid Rise Pull-on Cargo Trousers



**Sizes:**  
XXS-3XL (80cm)

- Contemporary fit
- Rib-knit covered elastic waistband with adjustable inside drawstring
- Five pockets: patch pockets, cargo pocket with pen slot, back pockets
- D-ring on left front patch pocket
- Side vents
- Tapered leg, 38cm opening

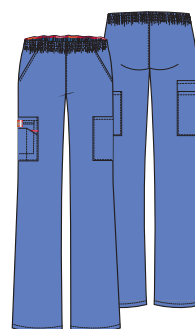
**Fabric:**  
Brushed 55 Cotton/45 Poly Poplin

**Care:**  
60°

**Available Colours:**

Black BLWZ	Ciel CIWZ	Navy NVWZ
Pewter PTWZ	Royal ROWZ	

### DKE86106 Natural Rise Pull-on Cargo Trousers



**Sizes:**  
XXS-3XL (80cm)

- Modern Classic fit
- All-around elastic waistband
- Five pockets: slash pockets, cargo pockets, Red knit interior pocket (White for White)
- Instrument loop
- Tapered leg, 42cm opening

**Fabric:**  
Brushed 55 Cotton/45 Poly Poplin

**Care:**  
60°

**Available Colours:**

Black BLWZ	Caribbean Blue CAWZ	Ciel CIWZ
Eggplant EGWZ	Hunter HUWZ	Navy NVWZ
Royal ROWZ	Teal Blue TLWZ	White WHWZ
Wine WIWZ	Pewter PTWZ	



UNISEX

DKE83706  
Unisex V-Neck Top

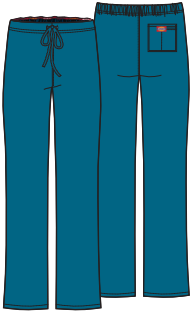


- Sizes:**  
XXS-3XL (71cm)
- Unisex fit
  - Chest pocket
  - Bartacked pen slot
  - Logo twill tape inside back neck
  - Side vents
- Fabric:**  
Brushed 55 Cotton/45 Poly Poplin
- Care:**  
60°

Available Colours:

Black BLWZ	Caribbean Blue CAWZ	Ciel CIWZ
Eggplant EGWZ	Hunter HUWZ	Navy NVWZ
Pewter PTWZ	Teal Blue TLWZ	Royal ROWZ
White WHWZ	Wine WIWZ	

DKE83006  
Natural Rise Drawstring Trousers



- Sizes:**  
XXS-3XL (78.5cm)
- Unisex fit
  - Back elastic waistband with drawstring
  - Back pocket with Galaxy Blue knit interior pocket (White for White)
  - Straight leg, 51.5cm opening
- Fabric:**  
Brushed 55 Cotton/45 Poly Poplin
- Care:**  
60°

Available Colours:

Black BLWZ	Caribbean Blue CAWZ	Ciel CIWZ
Eggplant EGWZ	Hunter HUWZ	Navy NVWZ
Pewter PTWZ	Teal Blue TLWZ	Royal ROWZ
White WHWZ	Wine WIWZ	

MEN'S

DKE81906  
V-Neck Top

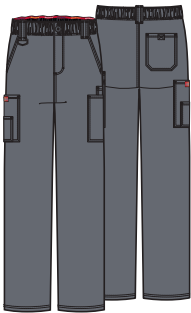


- Sizes:**  
XXS-3XL (73.5cm)
- Men's fit
  - Five pockets: patch pockets, double chest pocket with self-strap and D-ring, Galaxy Blue knit interior pocket (White for White)
  - Shoulder and back yokes
  - Center back seam
  - Side vents
- Fabric:**  
Brushed 55 Cotton/45 Poly Poplin
- Care:**  
60°

Available Colours:

Black BLWZ	Caribbean Blue CAWZ	Navy NVWZ
Pewter PTWZ		

DKE81006  
Natural Rise Zip Fly Pull-on Pant



- Sizes:**  
XXS-3XL (80cm)
- Men's fit
  - All-around elastic waistband with inside drawstring
  - Zip fly with button closure
  - Seven pockets: slash pockets, cargo pockets, back pocket with hook-and-loop closure
  - Three belt loops
  - D-ring at right belt loop
  - Straight leg, 51.5cm opening
- Fabric:**  
Brushed 55 Cotton/45 Poly Poplin
- Care:**  
60°

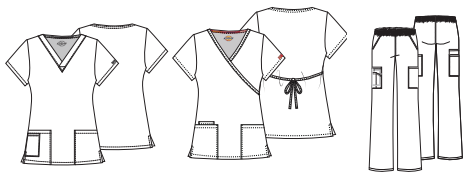
Available Colours:

Black BLWZ	Caribbean Blue CAWZ	Navy NVWZ
Pewter PTWZ		

EDS SIGNATURE  
COLOR AND  
STYLE MATRIX

All styles and colors featured are reorderable, unless otherwise noted. Styles are made from Brushed Cotton/Poly Poplin. Center back lengths and inseams are noted in parentheses.

WOMEN'S



DKE86706

V-Neck Top  
XXS-3XL (68.5cm)  
Modern  
Classic Fit

DKE632

Mock Wrap Tunic  
XXS-3XL (71cm)  
Contemporary Fit

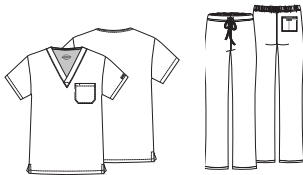
DKE86106

Natural Rise  
Pull-on  
Cargo Trousers  
XXS-3XL (80cm)  
Modern  
Classic Fit

DKE125

Mid Rise  
Pull-on  
Cargo Trousers  
XXS-3XL (80cm)  
Contemporary Fit

UNISEX



DKE83706

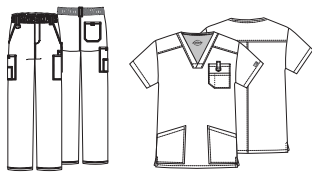
V-Neck Top  
XXS-3XL (71cm)

DKE83006

Natural Rise  
Drawstring Trousers  
XXS-3XL (78.5cm)

Black	BLWZ					
Navy	NVWZ					
Pewter	PTWZ					
Caribbean Blue	CAWZ		style not available in this color		style not available in this color	
Wine	WWZ				style not available in this color	
Royal	ROWZ					
Ciel	CIWZ					
White	WHWZ		style not available in this color		style not available in this color	
Eggplant	EGWZ		style not available in this color		style not available in this color	
Teal Blue	TLWZ		style not available in this color		style not available in this color	
Hunter Green	HUWZ		style not available in this color		style not available in this color	

MEN'S



DKE81006

Natural Rise  
Zip Fly  
Pull-on Trousers  
XXS-3XL (80cm)

DKE81906

V-Neck Top  
XXS-3XL (73.5cm)

Black	BLWZ		
Navy	NVWZ		
Pewter	PTWZ		
Caribbean Blue	CAWZ		





**MEDICAL**



**DKE520C**  
Unisex Top and  
Trousers Set  
in Wine  
(W1WZ)

## UNISEX SCRUB SETS

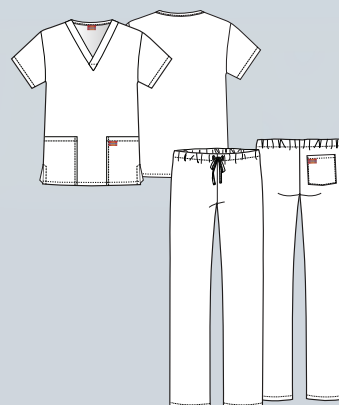
### UNISEX SCRUB SETS

Same Dickies Quality  
even better price.

These scrubs sets, available in 9 core colours, offer the comfort and durability you've come to expect from Dickies, at a price that's also down-to-earth. Each set features one top and one bottom, in a relaxed Unisex fit with plenty of pockets for all of your storage needs. Great for groups and medical school students.

#### **DKE520C**

Unisex Top and Trousers Set



**Sizes:**  
XXS-3XL (72cm)

- Unisex Fit
- 3 Pockets: Patch Pockets, Pant Back Pocket
- Drawstring Waist
- Tapered Leg
- Length: 78.5cm / 72cm
- Durable
- Easy care

**Fabric:**  
95 Poly/35 Cotton Poplin

**Care:**  
Industrial Launder



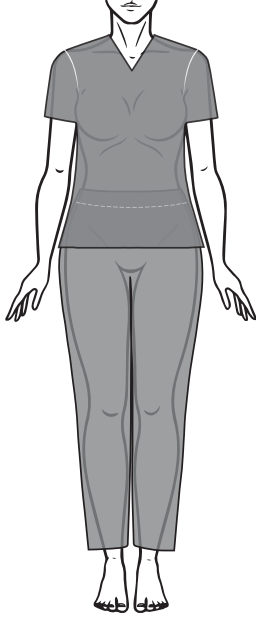
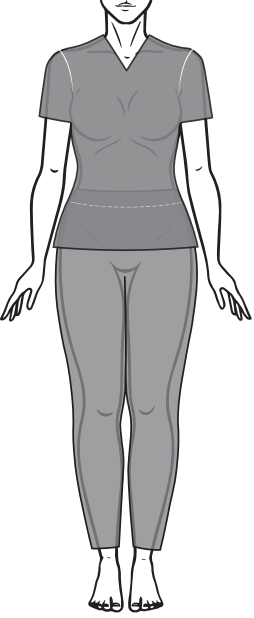
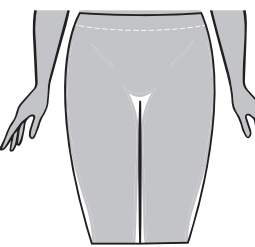
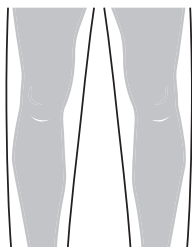
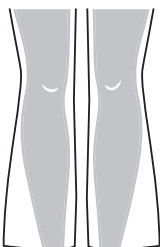
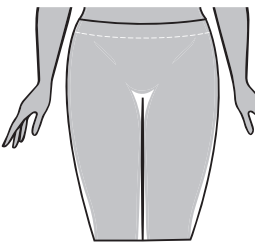
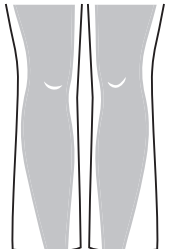
#### **Available Colours:**

Black BLWZ	Caribbean Blue CANZ	Ciel CIWZ
Hunter HUWZ	Navy NVWZ	Royal ROWZ
Wine W1WZ	Pewter PTWZ	White WTPS <sup>1</sup>

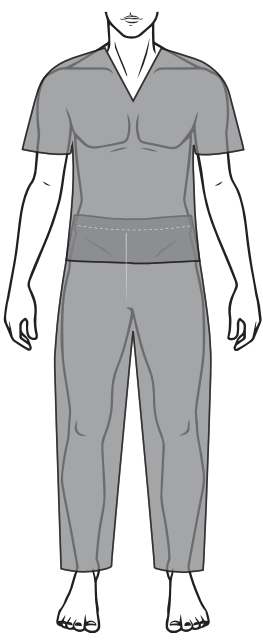
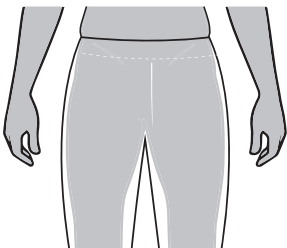
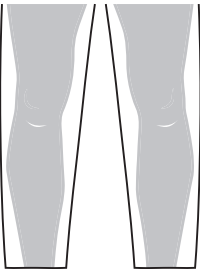
<sup>1</sup>45 Poly/55 Cotton Poplin

GARMENT FIT GUIDE

WOMEN'S

FIT GUIDE		WAIST	LEG FIT GUIDE	
MODERN CLASSIC FIT	CONTEMPORARY FIT	MID RISE	STRAIGHT	FLARE
				
		LOW RISE	MODERN	
				

MEN'S

FIT GUIDE	WAIST	LEG FIT GUIDE
MODERN CLASSIC FIT	NATURAL RISE	STRAIGHT
		



## SIZE CHARTS

### WOMEN'S MEASURING GUIDE

BUST

WAIST

HIPS

INSEAM

Measure under the arms  
around the fullest part  
of the bust/chest.

Measure under the  
natural waistline, loosely  
holding the tape measure.

Measure around the  
fullest part of the hips.

Measure along the inside  
of the leg, from just  
below the crotch to 1"  
below the ankle.

### MEN'S MEASURING GUIDE

CHEST

WAIST

HIPS

INSEAM

### MODERN CLASSIC/CONTEMPORARY FIT

	XXS 0	XS 2-4	S 6-8	M 10-12	L 14-16	XL 18-20	2XL 22-24	3XL 26-28
Bust	78.5-81	84-86.5	89-94	96.5-101.5	104-112	114.5-122	124.5-132	134.5-142
Waist	58.5-61	63.5-66	68.5-73.5	76-81.5	84-91.5	94-101.5	104-112	114-122
Hips	83.5-86	86.5-89	91.5-96.5	99-104	106.5-114.5	117-124.5	127-134.5	137-145
Inseam: Regular 77.5								

### UNISEX FIT

	XXS 0	XS 2-4	S 6-8	M 10-12	L 14-16	XL 18-20	2XL 22-24	3XL 26-28
Chest	79-82.5	84-86.5	89-93	94-100	101.5-109	112-119.5	123-129.5	132-140
Waist	58.5-62	63.5-67	68.5-72	73.5-80	81-89	91.5-100	101.5-109	112-120.5
Hips	84-86.5	89-93	94-97	99-104	106.5-115.5	117-124.5	127-136	137-146
Inseam: Regular 79								

### MEN'S FIT




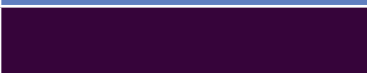








	XXS	XS	S	M	L	XL	2XL	3XL
Chest	76-81	84-89	91.5-96.5	99-104	107-114.5	117-125	127-134.5	137-145
Waist	53-58	61-66	68.5-73.5	76-81.5	84-91.5	94-101.5	104-112	114.5-122
Hips	76-81	84-89	91.5-96.5	99-104	107-114.5	117-125	127-134.5	137-145
Inseam: Regular 81								

Use the chart to determine your size. If one of your measurements is borderline between two sizes, order the smaller size for a tighter fit or the larger size for a looser fit. If your measurements for hips and waist correspond to two different suggested sizes, order the one indicated by your hip measurement. All measurements are in centimeters.

INDEX

STYLE#	PAGE(S)	STYLE#	PAGE(S)
DKE005	11	DKE632	14
DKE010	11	DKE645	11
DKE015	10, 11	DKE845	6, 7
DKE125	14	DKE870	4, 5, 6
DKE135	6	DKE81006	13, 15
DKE220	7	DKE81906	15
DKE502	11	DKE83006	15
DKE520C	17	DKE83706	15
DKE615	3, 9, 10	DKE86106	14
DKE625	4,10	DKE86706	4, 14

COLOUR ABBREVIATIONS

COLOUR NAME	COLOUR	ABBREVIATION(S)
Black		BAPS, BLK, BLWZ
Caribbean Blue		CAPS, CAWZ
Ciel		CIE, CIWZ
Eggplant		EGWZ
Galaxy Blue		GAB
Hunter Green		HUWZ
Navy		NVWZ
Pewter		PTWZ, PWPS
Royal		ROWZ, RYPS
Teal Blue		TLWZ
Wine		WIWZ, WNPS
White		WHT, WTPS

**DISTRIBUTION FRANCE**

**CMT**

**Compagnie Marseillaise  
de Textile**

---

**COMPAGNIE  
MARSEILLAISE DE  
TEXTILE**

**Stéphanie ZARKA  
contact@cmt.eu.com**

**25 Bvd Ledru Rollin  
Urban Park 18  
13015 Marseille  
www.cmt.eu.com**